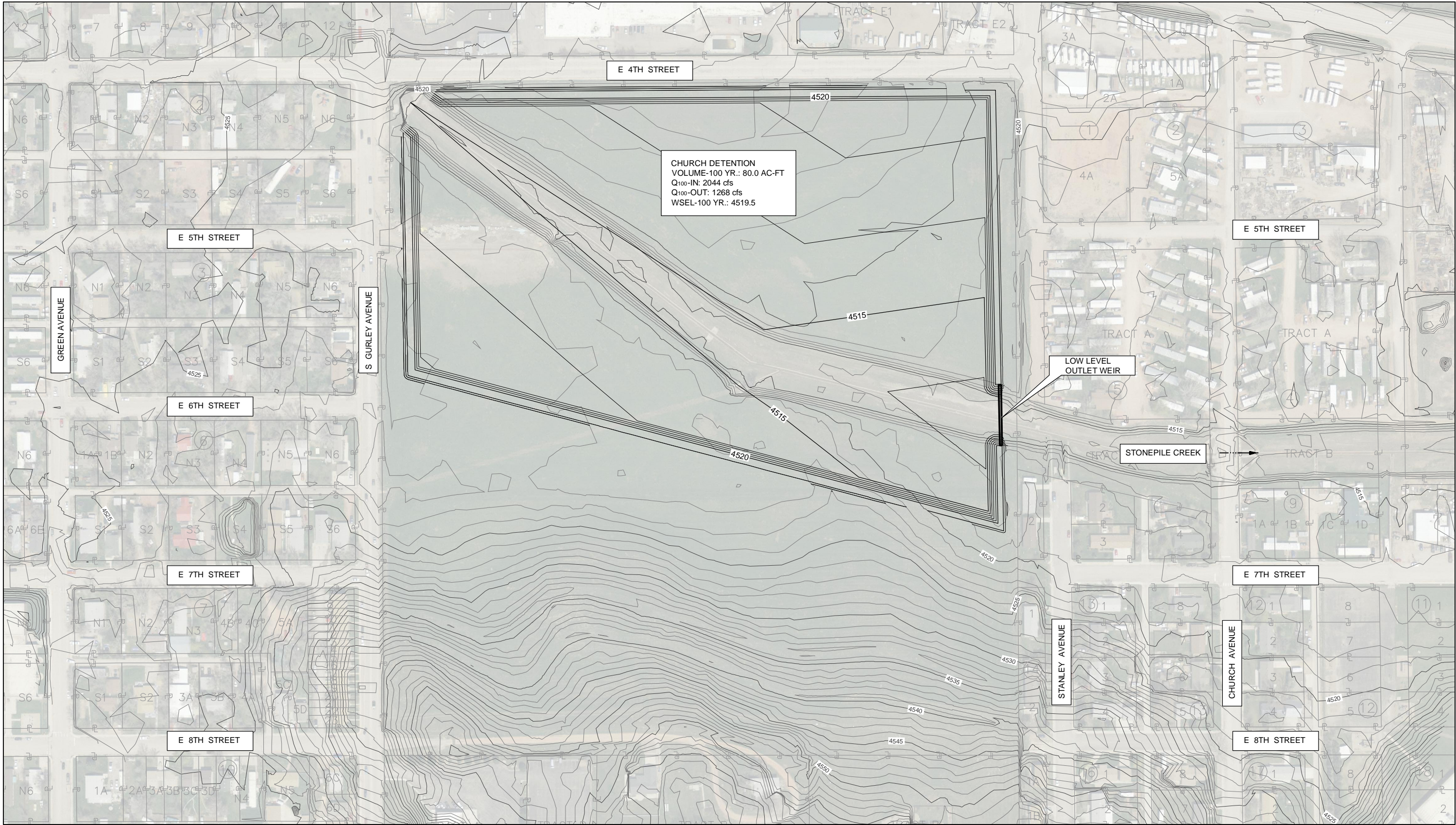
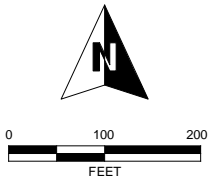
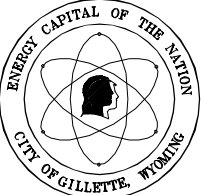


T:\Projects\2224173\_Gillette\_Stormwater\Sub\_00\1.0\_CAD\_085\1.05\_Working\_Files\Rail-Pond\_Volumes\GILLETTE\Fig G-22\Church.dwg



- NOTES:
1. GRADING ON POND BOTTOM SHALL PRESERVE NATURAL LOW FLOW CHANNEL.



Church Detention  
Conceptual Design

Church

AUGUST 2011

CITY OF GILLETTE  
201 E. 5TH STREET, P.O. BOX 3003  
GILLETTE, WYOMING 82717  
(307) 686-5364